

February 2017



"Called To Share God's Grace"
215 Gould Street
Beaver Dam, WI 53916
Phone 920/885-3198 • Fax 920/885-3899
www.bdgancechurch.org
Facebook: Grace Church Beaver Dam
▶ Volume 117, Issue 1

Not up for travelling 12 hours west in a caravan of teenagers?
Not interested in sleeping on a cot in a bunkhouse?
Not interested in hard labor in the hot sun without pay?

**GRACE YOUTH
MISSION TRIP
To Porcupine, SD**

Prayers= No cost!

**\$349 pays for room+board
for the week for 1 volunteer!**

THAT'S OK!
Perhaps you'd
rather adopt a
Mission Worker!
Writing a check to
GPC from the
comfort of your
home=priceless!

If you'd like to designate partial or full sponsorship to a mission volunteer, please contact Emily Shier at your convenience.

DIME CHALLENGE



*Toss some spare dimes in the bottle.
Once filled, we'll have about
\$500 for Youth Missions!
Could it BE that easy?
Find the bottle at the SCRIP table on Sunday mornings or in the
Church Office during office hours.*

Each month I try to reflect upon the many ways I've witnessed God's presence within the Grace community.

Even though I reflect with hindsight about Christmas Eve services each year at this time, I truly believe I experienced God's presence at both the 5:00 and 8:00 services.

In the past the 5:00 service was looked upon as the "Family" oriented service. This past year, I viewed the 5:00 service as both a traditional and "family" oriented service. The vision was simple - retell the familiar story! When the children made their way forward to hear the story, I was touched by how attentive and engaged they were. I loved how one had the courage to ask the whereabouts of the "wisemen." Others responded to questions about the story with energy as only a child has! At the end of the service, as we sang *Away in a Manger* and *Silent Night* with candles flickering, Christ's light was a beacon in the darkness! There is hope!

If I am going to be honest and true to myself, I love the 8:00 service of Lessons, Carols, Communion, and Candlelight! The lessons as read by each reader were communicated with such passion and conviction. The carols were sung with energy from deep inside our souls. The choir...the organ... AMAZING! Yes, the story was familiar! Yes, the service hasn't changed from year to year! Yes, you can expect many guests and family worshipping! And Yes, we come to know of the hope in the Christ child. I love it all!

With fear and much trembling, I approached both the Christmas Day and New Year's Day services with many questions. Who would show up? What would the expectation be? Would people be upset if the service was shorter than 1 hour? How many are going to be tweaked that I am having everyone sit in the center? To my surprise, there was great energy at both services. On Christmas Day we explored the question - How can the light of Christ be shared? On New Year's Day we explored - What gifts will you offer the Christ child? The Holy Spirit was present in not only the conversation but the entire service. I can't wait until the next time both Christmas Day and New Year's Day fall on a Sunday!!! REALLY!

Earlier on the same day of my writing this report/article I experienced God's presence through the granting of monies from the Family of Grace Fund! This is a fund designated by you the members of GPC administered by myself - the pastor - to assist those members in need of financial assistance. Even though this fund is small, I have the privilege of providing assistance and prayer - ideally giving hope and providing transformation. This fund was established well before I arrived on the scene, yet, I am so grateful for the vision to care for our members by having an emergency fund!

Even though my reflections for this past month are short, I still encourage you to know God is so present and so very tangible! Be still and seek God's presence!

May God's peace be with you all!

Pr Chris Davis



SECOND TUESDAY BOOK CLUB will meet Tuesday, February 14 at 9 AM. We will discuss the book, *The Lady with An Ostrich Feather Fan* by Frederick R. Andresen. All are welcome to attend. For more information, contact Ann Peck.

CONTEMPLATIVE PRAYER (Meditation) meets Wednesday mornings from 8:45-9:45 in the chapel. Join this group that meets to nurture and sustain spiritual vitality in contemporary life. New faces are always welcome.



WOW! MYSTERY BOX & SILENT AUCTION:
We raised over \$1500 on 1/15/17. Thank you!!!



Who Can Raise

More????????????????

Non-perishable food items from the adults go in the Food Pantry Bin.

Items from the children & youth go in the Preschool room.

Checks/cash made to GPC can go to the Church Office or Christian Education Director.

Final count: Monday 2/6/17 9am. If the adults raise more, the kids will serve you at Coffee Hour!

ANNUAL DELLS YOUTH TRIP

FEB 10-11, 2017

7PM FRI FEB 10-5PM SAT FEB 11

\$40 PER YOUTH: PAID BY 1/27/17!!!!!!!

SIGN UP WITH EMILY ASAP!



INCOME & EXPENSES:

Stewardship Update

December - Income

Offering Envelopes	\$ 45,698.00
Loose Offerings	\$ 845.00
Per Capita	\$ 120.00
Interest	\$ 6.27
Housing Allowance	\$ 500.00
Building Rental	\$ 350.00
Fellowship	\$ 37.00
Scrip Program	\$ 5,000.00
Christmas Joy Offering	\$ 360.00
TOTAL INCOME	\$ 52,916.27

December - Expenses

Missions	\$ 943.37
Session	\$ 392.41
Worship	\$ 1,857.52
Christian Education	\$ 3,252.35
Administration	\$ 9,350.06
Property	\$ 2,161.30
Deacon	\$ 183.84
Pastoral	\$ 8,130.85

EXPENSES \$26,271.70

Jesus invites us to be disciples. You are invited to answer Jesus' call to follow his example of Christian living.



SCRIP PROFIT REPORT

Support our church throughout the year!

January	\$ 408.10	May	\$338.64	Sept.	\$303.92
February	\$ 395.67	June	\$289.06	Oct.	\$311.97
March	\$276.28	July	\$97.21	Nov.	\$430.74
April	\$390.89	August	\$138.26	Dec.	\$414.32

We encourage families to shop with Scrip and help support Grace Presbyterian Church in the process.

2016 Year-End Contribution Statements

The year-end contribution statements have been mailed out to those who have given to the church in 2016. If you have any questions or concerns regarding your statement, please call the church office and talk to Paula.

Supporting the church is a way to put Christian values and your faith into action. Your personal contributions make a difference and are greatly appreciated!

2017 Offering Envelopes



Your 2017 Offering envelopes are now available for you to pick up. Please be sure to start using your new envelopes in 2017! For those who are on our Direct Contribution Plan or (EFT), there will not be a box of envelopes with your name on it since your offerings are paid electronically. Thank you!



PER CAPITA

"What Per Capita Means to You"

You should have received a letter and an offering envelope to be used for your Per Capita payment in the mail last week. We need each other as we witness and work in the ministry of Jesus Christ.

Per Capita is an opportunity for all members to participate in the operating of the Presbyterian Church USA. Presbyterians are connectional people whose presence is felt locally and around the world.

Per Capita enables the Presbyterian Church USA to manage the offices, and to hold the meetings so that ministry and mission can happen. It also pays for Books of Order, phone systems and Executive Presbyter searches among other things.

The 2016 Per Capita is \$30.00 per confirmed member. Remember, this includes both spouses and your confirmed children in your family. Once your child is confirmed into the church, they are full members and would need to fulfill the per capita assessment.

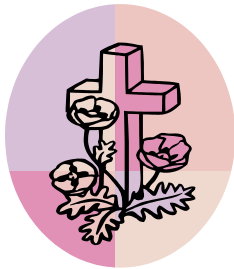
The Stewardship Committee's goal is to facilitate the ministry of Grace Church. We will continue to use the resources of this congregation wisely and welcome any interest or questions regarding the church's finances.

2016 Memorial Gifts Received

Gifts to the church are a wonderful way of honoring the memory of those we love and cherish. Grace Church received cash memorial gifts during 2016 in memory of the following people:

Buehl Cuff, Veda Frinak, Ernestine Kindy, Barbara Oakford, Margaret Propst, Charlotte Reifsnider, Darlene Schmitt, Marion Schroeder, Jean Sheskey, Delores Williams and Shirley Youngdale.

We are so grateful to those who have given to the church in this special way. Every gift is appreciated and makes a difference in maintaining a healthy future for Grace Church.



THANK YOU!

Dear members of Grace Presbyterian,
We are so grateful for your recent gift – thanks! Your generous gift of turkeys will help support PAVE's core services such as our safe and secure shelter, crisis hotlines, supportive options counseling, and prevention education in our community. Thank you for your continued faithful support of our programs and our mission to empower those affected by violence. Your generosity inspires us; we know we couldn't do it without you.

Teresa Nienow, Executive Director and Jessica Tiffany, Program Manager



Our condolences to the family and friends of member **Shirley Youngdale**. Shirley died on December 18, 2016. There will be a memorial service some time in late spring for Shirley.

Also the family and friends of member **Charles Ganske**. Charles died on January 18, 2017. His funeral service was at Grace Church on January 24.



THIRD WEDNESDAY WORSHIP

In the Chapel

2:15:17

6:00 ~ 6:30pm



Grace Clothes Closet

Mission Committee continues to offer no-cost clothing, 9-11 a.m., every second Saturday of each month, at the Dodge County Fairgrounds, Hwy 33 and Highpoint Road.



URGENT NEED! New or gently-used winter clothing: warm sweaters/sweatshirts, jeans, socks, mittens and gloves, hats and scarves, boots, coats, jackets and snowsuits (many of our patrons stand in line for food without these). Other much-needed items:

blankets, throws, bedspreads, pillowcases/sheets, and bath towels. Please drop off your bagged or boxed donations by the second Friday of the month in the first classroom on your right in the Grace CE Wing. Youth and adult volunteers are always welcome; simply come to the Pantry anytime you're able, or contact: Patrice Vossekul, 920/858-9468, pvossekul@iirp.edu; or Norm Klug, 920/210-1133, njklug05@charter.net

On behalf of all who benefit from our call to Share God's Grace...Thank You!

PAVE Wish List: For the month of **February**, PAVE wishes for **face cloths & towels, combs & hair brushes, make-up, eye brow pencils, lipstick, paper towels.**

Beaver Dam Food Pantry - Non-perishable and unexpired food items including canned goods, boxed meals, e.g., macaroni and cheese, Hamburger Helper, canned and boxed juices, baking items and pancake mixes.

PAVE & Food Pantry bins are located next to the main parking lot entrance at the Church.

February Birthdays

1 - Nancy Jung, Ana Miller
2 - Justin Rake
3 - Barbara Gregg, Betty Litscher, Brenda Propst
4 - Ramona Ehrhardt
5 - Andrea Zimmerman
6 - Peyton Apel, Audrey Bartell
7 - Todd Janssen
8 - Mason Janssen
9 - Delores Ellcey, Kasey Klug, Lowell Peck
10 - Sam Uhrich
11 - Carol Timm
12 - Ann Peck
13 - Brittni Davis
14 - Cody Freber-Infalt
15 - Kathy Mason
16 - Sofia Infalt
17 - Jim Olson
19 - Jack Bartholmai
20 - Pat Kroeze, Marla Noordhof, Penny Pohle, Lauren Wernimont
21 - Aaron Ganske, Tim Spinler
22 - Maya Puleo, Oliver Shier
25 - Scott Miller
27 - Alexander Lord
28 - Victoria Merrill



Grace frequently uses images from church activities and events on our website, Facebook page, in the newsletter, and for promotional purposes.

If you do not wish for us to use your image please contact the office.




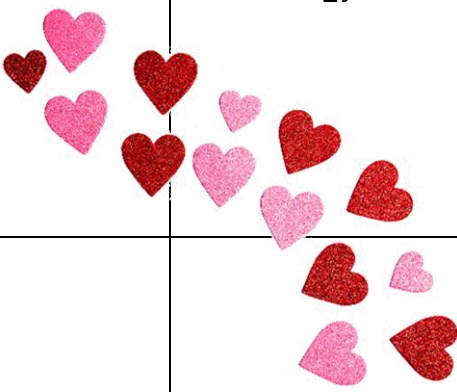
Don't Miss the

DEADLINE!

The next Courier deadline is February 13 for the March newsletter. Thanks!

FEBRUARY

2017

Sun	Mon	Tue	Wed	Thu	Fri	Sat
			1 8:45a Meditation	2 7:00p Choir Rehearsal	3 	4
5 8:45a Choir Rehearsal 9:30a Worship – Communion 10:30a Christian Education 10:45a Confirmation Class <i>Souper Bowl of Caring</i>	6 5:00p Stewardship Meeting 6:00p Worship Committee	7 9:00a Mom’s Group 9:30a Senior Coffee 6:00p Personnel Committee	8 8:45a Meditation 6:00p Session Meeting	9 7:00p Choir Rehearsal	10 <i>7:00p Youth WI Dells Trip</i>	11 <i>5:00p Trip Returns</i>
12 8:45a Choir Rehearsal 9:30a Worship 10:30a Christian Education 10:45a Confirmation Class	13 <i>March Newsletter Deadline</i> 6:30p Deacon Meeting	14 9:00a Mom’s Group 9:00a 2 nd Tuesday Book Club 9:30a Senior Coffee	15 8:45a Meditation 6:00p 3rd Wednesday Worship	16 7:00p Choir Rehearsal	17	18 
19 8:45a Choir Rehearsal 9:30a Worship 10:30a Christian Education 10:45a Confirmation Class	20 1:30p Hillside Manor Communion	<i>Courier</i> 21 9:00a Mom’s Group 9:30a Senior Coffee	22 8:45a Meditation	23 7:00p Choir Rehearsal	24 	25 
26 8:45a Choir Rehearsal 9:30a Worship – Confirmation Sunday 10:30a Christian Education	27	28 9:00a Mom’s Group 9:30a Senior Coffee				